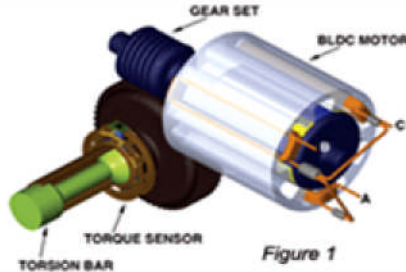
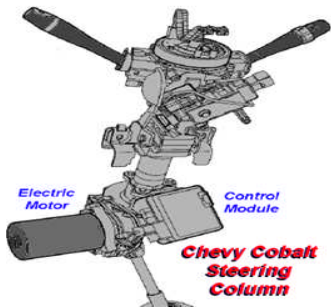


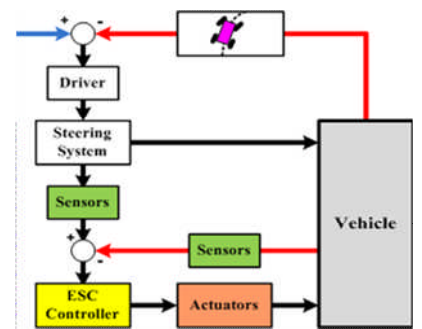
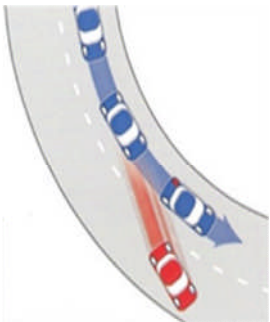
F.R.E.D Buses the Chassis Electronic Steering Systems
F.R.E.D Buses the Chassis - Ride & Stability Control Systems



Many Vehicles Currently Out of Warranty Are Equipped With Some Variation of Electronic Steering
Many Vehicles Already Have and ALL Vehicles Built After 2012 Will Have "Stability Ride Control"

Variable Effort Power Steering
 Electronic Assist Hydraulic Power Steer
 Electronic Power Steering Systems
 Wheel Position Torque Sensors
 VSS Interaction Communications
 Wheel Alignment Do's & Don'ts
 Diagnosing Electrical Failures

Lateral Accelerometers
 Yaw Rate Sensors
 Total Vehicle Systems Interactions
 Sensor Reset Procedures
 Systems Communication Issues
 Ride Height / Shock & Strut Issues
 Customer Misconceptions



Dave Hobbs aka "Mc Gyver" started in the 1970's working in the automotive industry 20 years as an independent repair shop tech diagnosing difficult vehicle electronic problems before joining a major OEM supplier in the 1990's as their hotline adviser and technical trainer, Dave has trained technicians as well as factory engineers worldwide. ASE Master & L1 certified, a frequent trainer at national seminars and instructor in numerous automotive training videos, Dave is well known for bringing the most advanced complex systems down to earth for the everyday tech.

AUTOMOTIVE TECHNICIAN TRAINING CENTER 718-492-0985
355 65th St. Brooklyn, NY.11220

Date: July Time: 7:00 PM Workbook incl

Bring in your USB thumb drives for additional material

